


# ATTENTION ANGLERS

## 2007 NJ Recreational Minimum Size, Possession Limits & Seasons

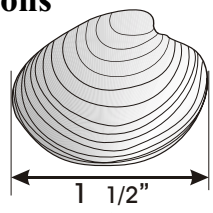
Fish are measured from tip of snout to tip of tail (*except Black Sea Bass*).  
 Cleaning or filleting of fish with a minimum size limit while at sea is prohibited.



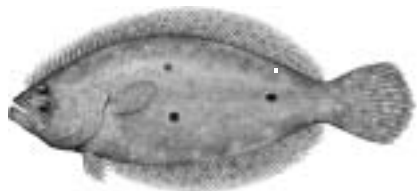
**Weakfish**  
 8 fish at 13 inches  
 Effective Oct. 2007: 6 fish at 13 inches



**Striped Bass or Hybrid Striped Bass**  
 2 fish at 28" or greater

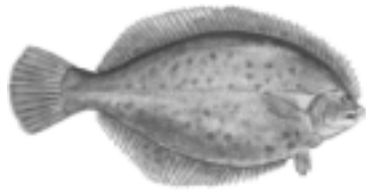


**Hard Clam**  
 recreational limit - 150 clams  
 No harvest on Sunday  
 License required



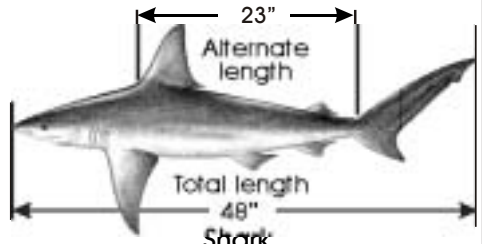
**Summer Flounder (Fluke)**  
 8 Fish at 17 inches  
 Open Season: May 26 - Sept. 10

Del. River & tribs. (Rt. 1 Bridge); Trenton, to Salem River & tribs.  
 Open Mar.1 - Mar. 31 & June 1 - Dec. 31  
 Atlantic Ocean ( 0-3 miles from shore ), no closed season  
 ( Greater than 3 miles from shore ), closed  
 All other marine waters, open Mar. 1 - Dec. 31



**Winter Flounder**  
 10 fish at 12 inches  
 Open Season: March 23 - May 21

**PROHIBITED SPECIES**  
*It is illegal to take, possess or land any of the following species:*  
**BIGEYE SAND TIGER SHARK**  
**SHORTNOSE STURGEON**  
**ATLANTIC STURGEON**  
**SAND TIGER SHARK**  
**BASKING SHARK**  
**WHALE SHARK**  
**WHITE SHARK**



**Shark**  
 2 fish per vessel



**Tautog 14 inches**  
 Open seasons:  
 4 fish Jan. 1 - May 31  
 1 fish June 1 - Nov. 14  
 8 fish Nov. 15 - Dec. 31



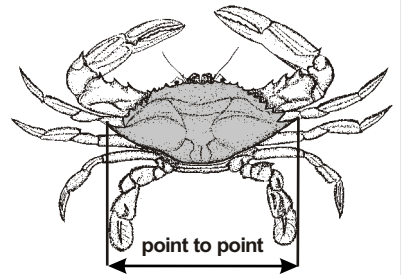
**Black Sea Bass**  
 Open season: Jan 1- Dec. 31



**Bluefish**  
 15 fish no minimum size  
 Open season: Jan 1 - Dec 31

OTHER SPECIES	POSSESSION LIMIT	TOTAL LENGTH
AMERICAN EEL.....	50.....	6"
BLACK DRUM.....	3.....	16"
COBIA.....	2.....	37"
COD.....	NO LIMIT.....	21"
HADDOCK.....	NO LIMIT.....	21"
KING MACKEREL.....	3.....	23"
POLLOCK.....	NO LIMIT.....	19"
RED DRUM.....	1.....	18"- 27"
SCUP (PORGY).....	50.....	9" (Jan.1-Feb.28 July 1-Dec.31)
SHAD.....	6.....	NO LIMIT
SPANISH MACKEREL.....	10.....	14"
LOBSTER.....	6.....	3 3/8"

(carapace length)



**Blue Crab**  
 peeler or shedder - 3 inches  
 soft - 3 1/2 inches  
 hard - 4 1/2 inches  
 recreational limit - one bushel  
 Crab pot/Trot line Seasons:  
 Delaware Bay & tributaries  
 April 6 - Dec. 4  
 All other waters  
 March 15 - Nov. 30



New Jersey Department of Environmental Protection  
 Division of Fish and Wildlife  
[www.njfishandwildlife.com](http://www.njfishandwildlife.com)

